

North Dakota crop budget regions (NDSU graphic)

NDSU crop budget projections show low returns for 2026

NDSU Extension has released projected crop budgets for 2026. These budget projections serve as guides for farmers in the state and are organized by multicounty region.

Returns and costs can vary considerably between producers within a region, and projected profits vary by region and crop. The budgets estimate returns to labor and management, with no consideration of price and yield variability or risk.

“There is no perfect comparison of crops because there are different levels of labor, management and risk to consider,” says Ron Haugen, NDSU Extension farm management specialist.

A warm, wet fall in 2025 contributed to higher-than-average soil fertility levels, explains Haugen.

“As a result, fertilizer ap-

plication rates should be lower in most regions,” says Haugen. “However, fertilizer prices are up, so the overall fertilizer cost per acre will be higher than 2025.

“This year, in most regions and for most crops, the projected profitability is low or negative,” continues Haugen. “Inputs and ownership costs are flat to somewhat higher, but lower commodity prices are the main contributor to the lower profitability. It’s a revenue problem.”

Chemical expenses are generally flat, fuel costs are down, interest costs are down, and ownership and repair costs are up. Some specialty crops may show a positive return but usually have limited contracts and acreages, and they may also carry a higher risk.

Individual farmers are encouraged to develop their own budgets with their specific estimates.

The NDSU Extension budgets are available online at ndsus.edu/cropbudgets26. A PDF version is also available, along with spreadsheets for producers to input their own estimates.

Printed copies are available at NDSU Extension county offices.

Donations for Sigdal Cemetery

Those wishing to make donations to help with the cost of tree replacement, upkeep, and general maintenance at Sigdal Cemetery are asked to send them to: Sigdal Cemetery Fund, 9343 24th St NE, Tolna, ND 58380.

MINUTES OF REGULAR MEETING NELSON COUNTY PARK BOARD

January 6, 2026 - 8:30 a.m.
The meeting was called to order by Chairman Cody Johnson with the following Park Board members also present: Doug Flaagan, Mike Haugland, Harley Eidsness, Cameron Swenson and Aaron Mork.

Moved by Park Board member Mork and seconded by Park Board member Swenson to approve the minutes for the December 16 meeting. All members voted “yes.” Motion carried.

Agenda Additions -- None.

Moved by Park Board member Mork and seconded by Park Board member Haugland to approve the agenda as presented. All members voted “yes.” Motion carried.

Public Comments -- None.
Campground business was discussed.

Bar and café business was discussed.

Moved by Park Board member Haugland and seconded by Park Board member Flaagan to pay the bills as presented: ND Telephone -- \$460.97; Tri-County Water -- \$207.80; Lakota American -- \$103.74; Nordak Electric Cooperative -- \$1,093.00. On a roll call vote all members voted “yes.” Motion carried.

There being no further business, moved by Park Board member Flaagan and seconded by Park Board member Haugland to adjourn the meeting. All members voted “yes.” Meeting adjourned.

Nathan Parks
Secretary

Cody Johnson
Chairman

MINUTES OF REGULAR MEETING NELSON COUNTY COMMISSION

January 6, 2026 - 9 a.m.
The meeting was called to order by Chairman Cody Johnson. Roll call was taken and the following members were also present: Commissioners Doug Flaagan, Mike Haugland, Cameron Swenson and Aaron Mork.

Moved by Commissioner Mork and seconded by Commissioner Haugland to approve the minutes from the December 16 meeting. All members voted “yes.” Motion carried.

Additions to Agenda -- Mileage rate and CD rates.

Moved by Commissioner Mork and seconded by Commissioner Swenson to approve the agenda as amended. All members voted “yes.” Motion carried.

Public Comments -- None.

Nathan Parks, auditor, presented new mileage rates from the IRS.

Moved by Commissioner Flaagan and seconded by Commissioner Haugland to approve an increase of the mileage rate to \$0.725 per mile in accordance with the IRS. All members voted “yes.” Motion carried.

Curt Loe, highway superintendent, joined the meeting to discuss road and bridge business.

Moved by Commissioner Haugland and seconded by Commissioner Mork to approve the updated motor grader payment schedule. All members voted “yes.” Motion carried.

Michelle Linstad, tax director, joined the meeting to give an update on tax director business.

Moved by Commissioner Swenson and seconded by Commissioner Mork to lower 2026 agriculture value by 2.5% in accordance with the state. All

members voted “yes.” Motion carried.

The current Law Enforcement Center joint powers agreement was reviewed.

Nathan Parks, auditor, presented current CD rates for review.

Traci Trostad, county agent, joined the meeting to provide an update on NDSU Extension.

The commissioners gave updates on their portfolios.

Moved by Commissioner Mork and seconded by Commissioner Swenson to approve the bills as presented. On a roll call vote all members voted “yes.” Motion carried.

ND Public Employees

Ret. System \$143,208.10
Internal Revenue

Service 58,775.48

Job Service of ND 2,204.62

Advanced Business

Methods 695.27

Arctic Blast GF 126.84

Axon Enterprise, Inc. 4,302.60

Butler Machinery 5,392.99

Canine Development

Group 169.28

Cenex Fleet Fueling 495.10

City of McVile 188.26

City of Michigan 26.25

NAPA--DL 59.80

FARMERS & Merchants

Bank 2,163.27

Farmers Union Oil

Co.--DL 1,662.66

Forrest Concepcion 258.22

Gilbertson's 573.00

Guardian Fleet Safety 24,817.55

KS State Bank 129,838.65

Kurita America, Inc. 1,096.46

LR Law Enforcement

Center 3,751.09

Lakota American 429.06

Lakota Car Wash 81.90

Lakota Municipal

Utilities 844.65

Leading Edge Equip. 105.83

Mac's Hardware 20.99

ND County Recorders

Assn. 500.00

ND Fraternal Order of

Police--West Fargo 135.00

ND Fraternal Order of

Police--GF 30.00

ND Telephone Co. 213.36

Nelson Auto Center 48,452.26

ODP Business

Solutions 217.24

Office of Attorney

General-1250 976.00

Peace Officers

Standards 135.00

Pitney Bowes 5,448.35

Polar Communications .. 726.14

Quill Corporation 147.05

Sign Solutions USA 1,069.13

Skip's NAPA Auto Parts 1,549.86

Sports Awards 167.54

The Duke's 16.00

Tolna Plumbing 293.97

Towner Co. Auditor 1,176.79

Tyler Technologies 4,080.00

Verizon Connect 181.33

Verizon Wireless 557.10

Information Technology

Dept. 1,284.40

Lakota Hardware 48.64

Vestis 175.54

G & R Controls 13,820.00

Josh Frey 1,688.19

Acme Tools 149.99

Amber Fahey 108.25

Applies Concepts, Inc. .. 205.00

Balco Uniforms 599.00

Brager Disposal 961.50

Griggs Co. Auditor 12,691.54

Gwyneth Wieler 136.01

Interstate Battery

System 119.95

Lighting for every room in the home

Lighting in a home is easily overlooked. But power outages serve as a stark reminder of the importance of lighting, which adds to the safety, functionality and aesthetic appeal of a space.

When homeowners go room to room, they can consider various types of lighting to add a unique feel to each space.

Kitchen

Kitchens are heavily trafficked rooms in many homes. A combination of overhead lighting that will illuminate the entire space and focused task lighting, like under-cabinet lights for meal prep, can help in the kitchen. Separate task lighting for a bill-paying area or homework station also can be a useful touch.

Bedroom

Bedrooms are cozy retreats where homeowners spend most of their time resting and relaxing. Harsh lighting may not be applicable here, so consider side lamps fitted with warm-hued bulbs placed beside a bed. Lighting can be more stark and targeted in closets to help homeowners see clothing and other belongings.

Bathroom

Bathroom lighting amenities can include a combination of features to fully optimize this space. Most homeowners will want some sort of overhead lighting to shed light on most of the space.

Task lighting by the mirror can offer more visibility while shaving or applying makeup. Lighting in a bathing area can keep such spaces safer by improving visibility in a generally slippery area. In bathrooms with spa-like settings, mood lighting paired with features like steam capabilities can enhance the space even further.

Garage and basement

Utility areas like garages, basements and crawl spaces need high-wattage bright light-



ing for safety. Installation of bright LEDs in these areas can make work projects easier and safer.

Well-lit areas also are generally less inviting to pests like insects and rodents, so bright lighting may deter these creatures in areas where they tend to enter a home.

Living room/great room

Living areas can benefit from a combination of ambient lighting sources. Table lamps alongside sofas and chairs will provide enough light, but will not compete with televisions or home theater setups. Lighting that highlights artwork or home accents also can add a cozy appeal to the space.

Additional lighting

Homeowners may want to consider a few additional lighting scenarios to improve their spaces. Lighting in a foyer or above coat racks or shoe cubbies can keep the space functional but attractive. A combination of overhead lighting and accent lighting can make a laundry room less utilitarian. And dining spaces can be intimate or grandiose depending on the fixtures featured in the room.

Homeowners also can utilize smart devices and bulbs to easily control the lights while at home or away.

-metrocreativeconnection

Beef Cattle Update set for Feb. 20 in McVile

Livestock producers in Nelson, Griggs, Grand Forks and Steele counties are invited to the 11th annual Beef Cattle Update hosted by NDSU Extension on Friday, Feb. 20 at the McVile Auditorium.

The event begins with a free lunch at noon provided by sponsors and served by Sissy's Bakery, followed by an afternoon of timely, producer-focused sessions.

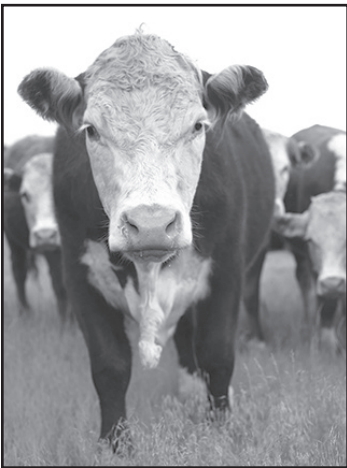
“Every year we try to bring topics producers can put to work right away,” said Traci Trostad, NDSU Extension agriculture and natural resources agent in Nelson County. “Whether it's herd health, market outlook or planning for what's next in the operation and the family, this update is about practical information you can take home and use.”

The agenda and presenters for the program are as follows:

• 12:30 p.m. -- Meet the new Extension Veterinarian: Dr. Jake Galbreath, NDSU Extension veterinarian

• 1 p.m. -- Veterinary Diagnostic Lab: Megan Vig, NDSU Extension agriculture and natural resources agent in Steele County, and Traci Trostad

• 1:20 p.m. -- Livestock Marketing Outlook: Tim Petry,



NDSU livestock economist

• 2:30 p.m. -- Succession Planning 101: Kelly Swenseth, attorney at Swenseth Law Office

This event is made possible with support from First United Bank, Haugen Cattle Company, Lakota Feed Inc., Ressler Land and Cattle, Ressler Ranch, Steele County Soil Conservation District, ND Livestock Alliance, Grassy Meadows Ranch and Cooperstown Veterinary Clinic.

Event information can be found at ndsus.edu/BCU-26.

For more information, contact Trostad at 701-247-2521 or traci.trostad@ndsus.edu or Vig at 701-524-2253 or megan.vig@ndsus.edu.



North Dakota farmers and ranchers are invited to attend a SARE workshop and webinar series offering practical guidance on farm labor and business decisions. (NDSU photo)

Labor, business guidance seminars for ND producers

North Dakota farmers and ranchers are invited to attend a workshop and webinars on farm labor and farm business structures, organized by the ND Sustainable Agriculture Research and Education (SARE) program.

Participants can attend the in-person workshop, the webinars or both.

“Farmers and ranchers are facing increasingly complex decisions around labor,” says Jeff Gale, NDSU Extension agriculture and natural resources agent and co-coordinator of SARE in the state. “These workshops and webinars provide practical, real-world guidance to help producers make informed choices that strengthen their operations and support long-term success.”

The full-day in-person workshop will be held Tuesday, Feb. 24 from 9:30 a.m. to 3:30 p.m. at the ND Farmers Union headquarters in Jamestown.

The morning session will focus on the H-2A temporary agricultural worker program. The information will cover opportunities and legal, financial and ethical considerations, such as housing, compensation and

timelines.

The afternoon session will examine farm business structures, comparing sole proprietorships, partnerships, limited liability companies (LLCs) and corporations, with a special emphasis on liability protection, governance, taxation and risk management.

Two webinars will be held after the workshop. The March 3 webinar will address employee benefits, including bonuses, health insurance support and pertinent legal aspects. The March 10 webinar will focus on farm liability, insurance and risk management strategies.

The webinars will be conducted by Rachel Armstrong, executive director of Farm Commons, which is a national nonprofit organization that translates complex farm law into practical guidance. The training emphasizes interactive discussion, real-world examples and Q&As.

To register, visit ndsus.edu/labor-business26. There is a registration fee, and the deadline is February 18. For more information, contact ND SARE co-coordinators Karl Hoppe at 701-652-2951 or Gale at 701-652-2581.

LEON'S BUILDING CENTER, INC.

448 Hwy. 2 W. | Devils Lake, ND
701-662-3416
www.leonsbuildingcenter.com

Building Materials FOR

- > RESIDENTIAL
- > AGRICULTURAL
- > COMMERCIAL

PROJECTS

Featuring Northland Steel

Northland Steel & Trim

PLUMBING, HEATING & AIR CONDITIONING

Serving the Area for Over 100 Years!

Providing & Servicing All Heating Sources:
Furnaces • Boilers • Geothermal • Fuel Oil
Natural Gas • Electric • Ground Source
Coal • Propane

KLEMETSrud's 217 4th Street • Devils Lake
662-4934 or 800-562-1315

Stein SEED COMPANY

Stein Seed | McVile, ND | 701-322-4350
www.steinseed.com

- **AgriPro Wheat**
- **HY155 & HY162 Hybrid Wheat**
- **NEW AP Iconic**
- **NEW AP Dagr**
- **AP Elevate**
- **AP Murdock**
- **AP Smith**
- **SY Valda**
- **AAC Synergy - Two-row Barley**
- **Soybeans & Corn**

Custom Seed Cleaning
Crop Protection Products
Blended Dry Bulk Fertilizer Plant
Fertilizer application and tender truck delivery available

NK **LG** **INTEGRA** **AP SELECT**